

## Mid-Columbia Fisheries Enhancement Group

### MISSION STATEMENT

The Mid-Columbia Fisheries Enhancement Group is a non-profit organization dedicated to restoring self-sustaining salmon and steelhead populations through habitat preservation and restoration projects which assist landowners and promote community partnerships throughout our region.

### OVERVIEW OF MID-COLUMBIA FISHERIES ENHANCEMENT GROUP

The Mid-Columbia Fisheries Enhancement Group (MCFEG) covers a diverse region from Bonneville Dam at the downstream end to the Kittitas/Chelan County line on the north end. The major rivers in this region include the Wind, the Little White Salmon, the White Salmon, the Klickitat, and the Yakima River and its numerous tributaries. The Mid-Columbia region is ecologically diverse with areas of the Wind River receiving more than 100 inches of rainfall a year, and eastern portions of the region receiving as little as eight inches of precipitation a year. Additionally, significant areas of land within the region are owned by the Yakama Nation, and the U.S. federal government (both US Forest Service, and US Departments of Defense and Energy).

Due to the size of the region and diversity of watershed issues and ownership, MCFEG's approach has been to work closely with partners throughout our region to help protect and restore salmon and steelhead habitat. The Washington Department of Fish and Wildlife and the Yakama Nation continue to be our strongest partners. Both entities provide technical assistance with individual projects. Regional Fisheries Enhancement funding has been invaluable in helping secure habitat protection opportunities sponsored by the Yakama Nation. The Nation and Mid-Columbia Fisheries have also partnered on a number of grants. This year our partnership helped the Yakama Nation receive a grant for fencing and restoration work on Rock Creek, an important tributary to the Columbia in central Klickitat County.

In addition to the Yakama Nation, MCFEG has strengthened partnerships with local conservation districts and counties. Our region includes six conservation districts and five counties: all of Klickitat, Benton, Yakima, and Kittitas Counties, and a portion of Skamania County. Other partners include private landowners, cities, land trusts, U.S. Fish and Wildlife Service, sport fishers, and schools.

Mid-Columbia Fisheries Enhancement Group continues to focus on restoration and protection of critical salmonid habitat. This year, MCFEG staff spent considerable time developing new projects which will be implemented in the coming fiscal years. Projects being planned include:

- fish passage projects on tributaries to the Columbia River,
- fencing, riparian, and rechannelization projects on tributaries to the Yakima River,
- riparian plantings along the Klickitat River,
- riparian, bank stabilization, and instream projects on tributaries to the Klickitat River,
- riparian, slope-stabilization, assessment, and road storm-proofing on the Wind River and its tributaries, and
- riparian assessment, protection and restoration on the upper Cle Elum River.



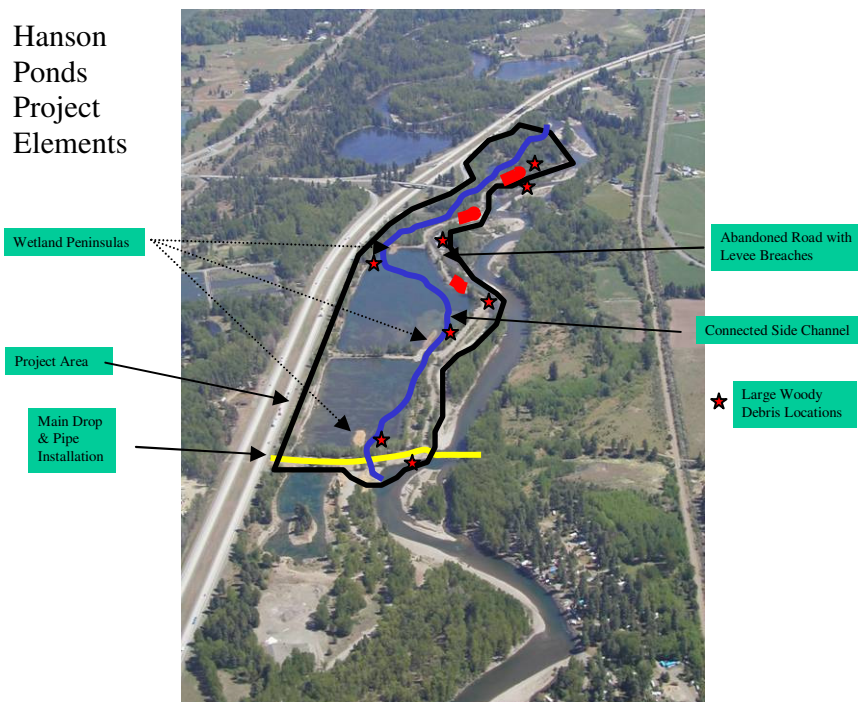
*Large wood placed in side-channel at Hanson Ponds*

## PROJECT HIGHLIGHTS

### Hanson Ponds

This project recreated a large side channel (approximately 5,000 feet in length) along the Yakima River mainstem. To accomplish this, a 4500-foot levee was breached, allowing a controlled portion of the river to flow through the Hanson Ponds, which are shallow, floodplain gravel pits. Over 100 pieces of large woody debris were placed in the ponds and river to enhance stream complexity, and excavation spoils have been placed in the ponds to create wetland peninsulas. The levee served as an access road into the property. The roadway surface was ripped and seeded. This project provides improved rearing habitat for juvenile spring Chinook, coho, steelhead, and resident game fish. This project was a partnership between the Yakama Nation, the City of Cle Elum, Washington Department of Transportation, Washington Fish and Wildlife, and others.

The Yakama Nation is monitoring juvenile coho survival in the ponds. First year data indicates that fish reared in Hanson Ponds have a nearly twice as high survival rate in reaching Prosser Dam as coho reared in the river.



### Habitat Protection / Holmes Floodplain Property

Mid-Columbia Fisheries Enhancement Group is providing assistance to the Yakama Nation to purchase and protect the Holmes property, which has critical side-channel, tributary, wetland and floodplain habitat. A side channel of the Yakima River flows through 2400' of the property, entering the river just below the downstream property boundary. The property includes a large, senior water right that will be placed in the Yakima Basin Water Trust when the property is acquired in the fall of 2005. The water is currently used for irrigation to support livestock grazing, but once purchased the water can be used to augment flows during smolt outmigration. This site is also used for coho acclimation as part of the Yakama Nation's coho reintroduction program.

## Riparian Restoration

Mid-Columbia Fisheries Enhancement Group is working to restore riparian areas on a number of rivers and streams in our region. This year, Mid-Columbia Fisheries sponsored volunteer work projects at sites in the Klickitat and Wind River basins. Contract and Americorps crews are revegetating other sites.



*Fourth graders plant trees along Snyder Creek*

Mid-Columbia Fisheries continues to work at strengthening our partnerships and supporting restoration and protection projects throughout our region. As part of this goal, we increased our contacts this year with potential partners in all areas of the region, including the Lower Yakima/Benton County area. We have also increased our participation in the Wind River Watershed Council, the Jewett Creek Streamkeepers, the Klickitat Lead Entity, and other local processes that promote our mission.

## Outreach & Education

Community volunteers assisted on a number of restoration projects this year. In the fall of 2004, fourth graders at the Klickitat Elementary School continued a 'Students for Salmon' program that included classroom lessons, a parents' showcase, and a field trip to a nearby restoration project. Elementary and high school students also volunteered time to plant native trees along Snyder Creek. With grant funding, we were also able to purchase an incubator and chiller so that students at the Klickitat School will be able to raise salmon in their classroom as part of the U.S. Fish and Wildlife Service's Salmon in the Classroom program.

In May, Mid-Columbia Fisheries helped staff a "Salmon Summit" event sponsored by the Benton Conservation District that was the culmination of a Salmon in the Classroom project for 1,200 fourth graders in the tri-city area.

Mid-Columbia Fisheries developed a new brochure this year, which was distributed (along with other outreach materials) to interested residents at the Skamania, Klickitat, and Kittitas County fairs, and other watershed events in the region.



*Student and teacher record monitoring data at Snyder Creek, October, 2004.*

**PROJECT EXPENDITURES**

<u>Project Title</u>	<u>RFE Funds</u>	<u>Vol. Hours</u>	<u>Volunteer Dollars</u>	<u>Other Funds Leveraged Through MCFEG</u>	<u>Other Funds Leveraged Through Partners This Fiscal Year</u>	<u>Total</u>
Klickitat Mill Passage Plants for Stream Restoration Blockhouse/Spring Creek Riparian	\$4,069.50	160	\$2,400.00	\$2,491.00	\$200,000 SRFB to WDFW	\$208,960.50
Hanson Ponds	\$1,637.56				\$300 UCD	\$2,037.39
Holmes Acquisition	\$8,995.00				\$10,000 Yakama Nation \$ leveraged in 05-06 fiscal year by Yakama Nation	\$2,632.55
Outreach	\$2,015.04			\$2,400.00		\$11,637.56
Staffing, Insurance, Administration, Mgmt	\$35,016.38	145	\$2,175.00			\$8,995.00
Project Development	\$0.00			\$4,240.00		\$4,415.04
<b>TOTAL</b>	<b>\$54,783.42</b>	<b>393</b>	<b>\$5,895.00</b>	<b>\$9,131.00</b>	<b>\$210,300.00</b>	<b>\$280,109.42</b>



*Tributary to Yakima River, Holmes property*

## Board of Directors

<u>Name</u>	<u>Position</u>	<u>Affiliation</u>	<u>Watershed</u>
Glenn Miller	<i>President</i>	Construction Manager, Yakima County Road Department	Yakima Basin
Jim Maine	<i>Vice President</i>	Civil Engineer	Yakima Basin
Doug Miller	<i>Board Member</i>	Klickitat PUD	Klickitat Basin
Mark Harvey	<i>Board Member</i>	Environmental compliance & management	Klickitat Basin
Blake Murphy	<i>Board Member</i>	Washington Dept. of Natural Resources, White Salmon Watershed Management Committee	White Salmon Basin

## Staff

Margaret Neuman, Director

## Contact Information

Mid-Columbia Fisheries Enhancement Group  
P.O. Box 1271  
White Salmon, WA 98672  
Phone: 541-806-0936  
Email: [fish@midcolumbiarfeg.com](mailto:fish@midcolumbiarfeg.com)  
Website: [www.midcolumbiarfeg.com](http://www.midcolumbiarfeg.com)

